

Easy Operation in cause of the established princip of manipulator

Optimal cost-performance ratio

Ergonomic

Visionsystem

Flexibility of the component feeder



### Multi Placer

The universal assembly station **MP904** combines the easy and flexible operation of a manipulator with the high standards of exact placing of Fine-Pitch components.

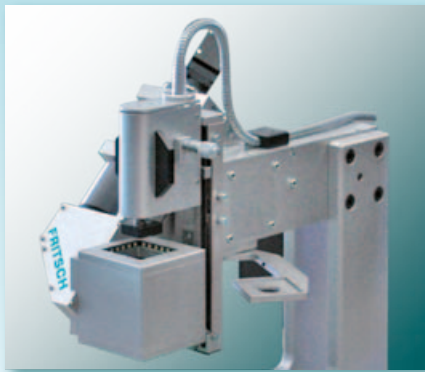
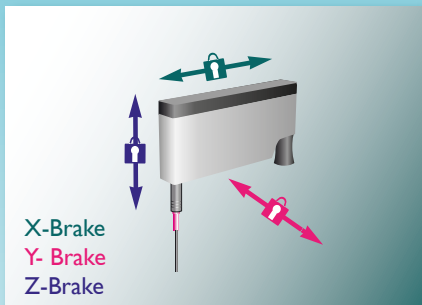
The smooth-running guide of the mounting head helps to place the SMDs accurately. When the pipette comes into contact with the components, the vacuum automatically switches itself on and when placing them, it switches off.

The specialised vision system allows the optimal placement of BGA and QFN components. The range of assembly elements starts by Chip 0201 and ends at Fine-Pitch and BGA.

### Dispenser Unit

A dispenser unit can be integrated for dispensing soldering paste and adhesive. An adapter is fixed at the assembly head. The control of the dispensing time and pressure guarantees an exact result.





## Locking device

The X/Y/Z locking device ensures precision mounting. Individual movement axes can be locked.

## Fine Pitch and BGA placement

The solid construction of the Handling Head insures highly precise placement of BGA and Fine Pitch Components. The specialised vision system allows two pictures to be viewed simultaneously. The PCB and the underside of the BGA can be observed. With the help of a Fine-Setting-table and micrometer screws both exposures can be adjusted exactly congruent. An easy and accurate placement of the components is assured.

## Variants

The system is available as a simple Manual System or as a software supported Semi Automatic Manipulator.

### MP904.410 Multi Placer for pick & place

Scope of delivery:

- 1 basic system
- 1 hand rest
- 2 nozzles 910.301
- 1 nozzle with suction pad 910.311
- 3 replacement filters 80.0993.00
- 2 main cables 60.0019.00
- 1 video cable
- 1 monitor 17"
- 1 universal nozzle with suction pad D=8mm 973.001
- 1 universal application for centering, double sided 974.004
- 1 manual switch-key

### MP904.411 Multi Placer for pick & place and dispensing

Scope of delivery: like **MP 904.210** but with

- 1 dispenser unit
- 1 cartridge adapter 5ccm 931.010
- 1 cartridge of solder paste 932.108
- 2 dispenser needles, yellow 931.009
- 1 replacement knurled screw 80.0071.00

- MP904.420** Semi-automatic Multi Placer for pick & place  
Scope of delivery:  
1 basic system  
1 hand rest  
1 nozzle 971.130  
1 nozzle with suction pad 971.390  
2 main cables 60.0019.00  
1 video cable  
1 monitor 17"  
1 universal nozzle with suction pad D=8mm 973.001  
1 universal application for centering, double sided 974.004  
1 manual switch-key

- MP904.421** Semi-automatic Multi Placer for pick & place and dispensing  
Scope of delivery: like **MP 904.420** but with  
1 dispenser unit  
1 cartridge adapter 5ccm 931.010  
1 cartridge of solder paste 932.108  
2 dispenser needles, yellow 931.009  
1 replacement knurled screw 80.0071.00



## Technical details

According to experience, the assembly capacity is  
300-600 SMDs/hour.

Dimensions: 1160 mm x 700 mm  
Max. size of PBC: 340 mm x 250 mm  
Max. assembly area: 340 mm x 250 mm

Fritsch GmbH  
Bestückungs- und Montagesysteme  
Kastler Straße 11  
D-92280 Kastl-Utzenhofen

Tel. +49(0) 9625-9210-0  
Fax +49(0) 9625-9210-49

[www.fritsch-smt.com](http://www.fritsch-smt.com)  
[info@fritsch-smt.com](mailto:info@fritsch-smt.com)